

**WEST SWINDON PARISH COUNCIL**

**Planning, Leisure & Environment Committee**

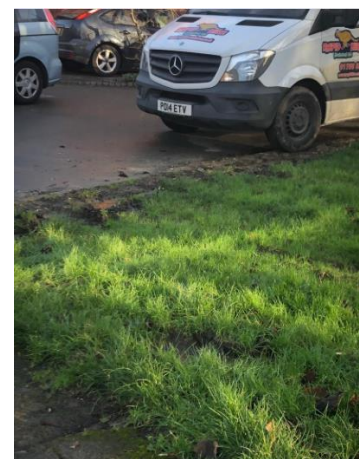
**Ramleaze – Parking Issues** as requested by Cllr Nandini Singh

**1. Introduction:**

- 1.1 West Swindon Parish Council has no authority or responsibilities in relation to the provision or enforcement of parking however residents make contact with the Council on parking related matters.
- 1.2 Under the Traffic Management Act, Swindon Borough Council can issue a range of parking enforcement penalties. Most relevant to residential areas is the following:
- *Parked with one or more wheels on or over a footpath or any part of a road other than a carriageway*  
*Offence code: 62*
- 1.3 The Police retain powers to enforce:
- dangerous or obstructive parking
  - vehicles parked on pedestrian crossings and zig zag lines
  - moving vehicle violations

**2. Detail – Redcap Gardens (off Ramleaze Drive)**

- 2.1 Some residents in Redcap Gardens have made representation to Councillors regarding parking issues in their street. These concerns generally emanate from what is perceived to be a lack of availability for parking. This is often exacerbated by multiple cars per household and commercial vehicle parking. As a result, concerns have included
- blocking access to pathways
  - parking on pavements creating obstructions for pedestrians
  - parking on grassed areas creating damage to the grass and tracking mud/soil debris across pavements
  - reducing access for emergency vehicles



- 2.2 A 'Do Not Obstruct The Footpath' sign has recently been installed to remind vehicles to keep clear access to the pathway.
- 2.3 Reports requesting a review of public parking in this area have been submitted to Swindon Borough Council. Swindon Borough Council Highways has been notified of the complaints from residents and both Parish Councillors and Swindon Borough Councillors for Shaw Ward have raised these issues.
- 2.4 A number of residents are asking the Parish Council to facilitate parking at the end of Redcap Gardens through a number of options on the public open space area which is prone to vehicle parking. Residents appear to agree that facilitating vehicles to park partly off road on the grassed area is helpful to ensure that vehicle access to properties is not obstructed. There is little support for planting the grassed area to restrict parking.
- 2.5 If the Parish Council was minded to assist, a number of grounds related options may be helpful to consider
- adding French drains to the grassed area to reduce water accumulation and thereby possibly reduce churn/mud tracks from vehicle parking
  - adding grasscrete paving mats to protect/reinforce the grassed surface
  - creating a stone and dust surface to the edge of the grassed area

This grassed area has a number of service lines. The feasibility of any of the above options has not been tested.

### **Detail – Tamworth Drive/Ramleaze Drive**

- 2.6 Cllr Nandini Singh and Cllr Suresh Gattapur have raised issues relating to obstructive parking on pavements and junctions in Tamworth Drive, Berkshire Drive and Ramleaze Drive. Many of these vehicles are parked on pavements for extended periods of time and repeatedly obscuring visibility at junctions and creating obstructions to pedestrians and buses. These issues have been reported to Swindon Borough Council Parking Enforcement and will be raised at the next West Swindon Community Safety meeting.

### **3. Considerations**

- 3.1 Responding to parking related matters is not a direct responsibility of the Parish Council and its representatives. Parish Councillor engagement in parking matters is restricted by the lack of powers and limited resources of the Parish Council.
- 3.2 Generally there are parking issues in the majority of residential streets across West Swindon. The Parish Council has not conducted any audit or assessment that would assist with prioritisation of any schemes.
- 3.3 West Swindon Parish Council has aided restrictions to parking on previous occasions with small amounts of planting, as for example, in Boleyn Close and Bevil. The Parish Council has not made interventions to facilitate parking.

- 3.4 To date, the Highways department have not instigated an intervention for residents in this area. Depending on what is proposed, they may need to approve any actions made by the Parish Council.

#### **4. Financial Implications**

- 4.1 The Parish Council has not planned any highways projects in the current financial year. There is £1000 budget for small highways projects which is aimed to cover licenses e.g. for planters, signage and small project works.
- 4.2 The options set out in paragraph 2.5 have not been costed. They are likely to be low level costs within the £1000 budget.

#### **5. Recommendations**

- 5.1 That this Committee determines
- a) How the Parish Council can provide a consistent and reasonable response in relation to parking issues within the Parish
  - b) Whether it wishes to progress any options to address issues in Redcap Gardens

Paula Harrison  
Parish Manager